

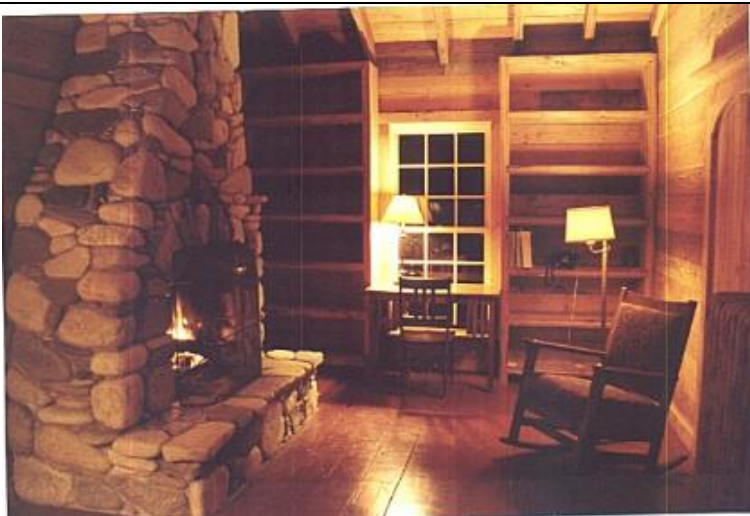
Whimsical pondfront country house and writer's studio. Located in desirable Lambert's Cove. Quintessentially Martha's Vineyard!



This is the wonderful view from the back deck off the living room. There are no other houses on this scenic vernal pond, so you'll feel like you're miles away from civilization!! Yet, Vineyard Haven is less than 2 miles away and West Tisbury is 3 miles away.



This is a view of the deck with wisteria in the back of the house, facing the pond. There are mature plantings throughout the three acre property. The flora here is much lusher than most of the rest of the island, thanks to the vernal pond system.

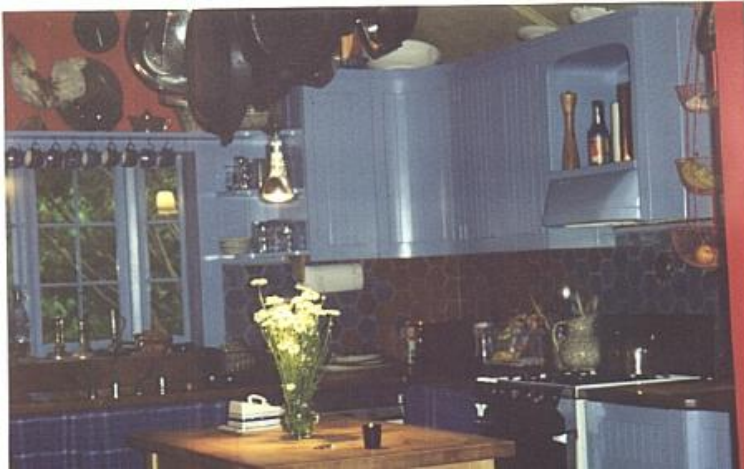


This is the master bedroom at night, with a roaring fire in the fieldstone fireplace. During the day, there is a spectacular view of the pond in the back. It's a great room for a romantic evening by the fire. The furniture is mission style, including a writing desk with chair and a rocking chair. There is a queen size bed.

For more information, please call Ben at (917) 608-4112
or send email to info@marthasvineyardrental.com
Please see our website at www.marthasvineyardrental.com



This is the downstairs guest bedroom. It has three large windows and a door to the rear deck with excellent views of the pond in back. There are two twin extra-long beds. The ladder leads to a sleeping loft.



The country kitchen is well equipped with pots and pans, dishes, microwave, dishwasher, coffee maker, blender and toaster. Gas stove, washer and dryer. The kitchen is well-lit with windows on three sides and a skylight. A large table comfortably seats six with room for eight.



This is the living room with large windows and french doors to the deck overlooking the pond. The room is very bright as it also has a southern-facing skylight. There is a Sony TV with cable, VCR, and stereo with CD player.

For more information, please call Ben at (917) 608-4112
or send email to info@marthasvineyardrental.com
Please see our website at www.marthasvineyardrental.com



Another view of the living room, which also has a wonderful antique wood-burning stove to keep you warm on those cold New England nights. A woodshed off the kitchen has stacks of logs.



This is the writer's studio, located directly on the shore of Flat Bottom Pond. It is perfect for the extended family with a young couple or teenage children, for a little extra privacy from the group. Sitting at the large bay window inside or on the deck outside, you'll have plenty of inspiration to write or read.



This is an interior view of the charming writer's studio. There is a large bay window with direct views of the pond only yards away. A family of ducks with eight ducklings have taken up residence on the pond during the past few summers. The bedroom has a queen size bed.